

Element HT5+ Reliable and fast

The reliability of a reference laboratory in your clinic with **Element HT5+**!

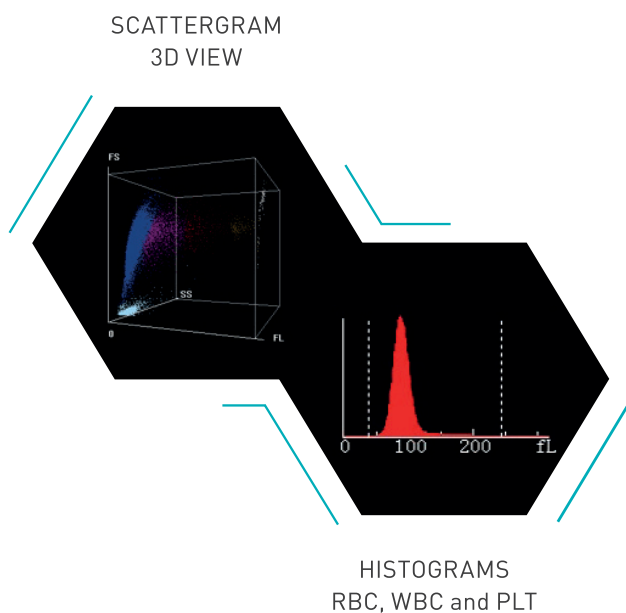
Get a fast and complete blood count with **33 parameters including reticulocytes**. Easy and fast reading of results from the analyzer screen. Histograms presence combined with the **3D view scattergram** function allows you to obtain a visual representation of your results for an ever more accurate diagnosis.

INFORMATION
patient and sample

PARAMETERS & RESULTS

FLAGS & INTERPRETATIVE MESSAGES

HISTOGRAM & SCATTERGRAM INFORMATION



TECHNICAL DATA	
Connection	4 x USB, 1 x Ethernet, bidirectionality
Size	435 x 325 x 410 mm (WxDxH)
Weight	25 kg
Display	Touchscreen display



reset program
5 reasons to adopt it!

Transparency
Performance
Profitability

- 01
Cutting edge tech
- 02
Free analyzer use
- 03
Services included
- 04
Lowest test prices
- 05
Price protection



scil.
Partner for excellent

Veterinary Medicine
Medical Technology
Veterinary Education
Career

scilvet.com
V-202305

scil animal care company Tel.: +49 (0) 6204 7890 - 0 Fax: +49 (0) 6204 7890 - 200 info-de@scilvet.com

element HT5+
VETERINARY HEMATOLOGY ANALYZER

PRODUCT BROCHURE



Element HT5+ Hematology in everyday life!

FAST	SIMPLE	EFFICIENT
<ul style="list-style-type: none"> Large touchscreen. Intuitive and quick-to-learn features for an accelerated workflow. 	<ul style="list-style-type: none"> RFID reader integrated to the analyzer. More than easy to install reagents. 	<ul style="list-style-type: none"> Bidirectionality. Create a request and manage the incoming patient data directly in your practise management software.

Complete blood count in less than 2 minutes!

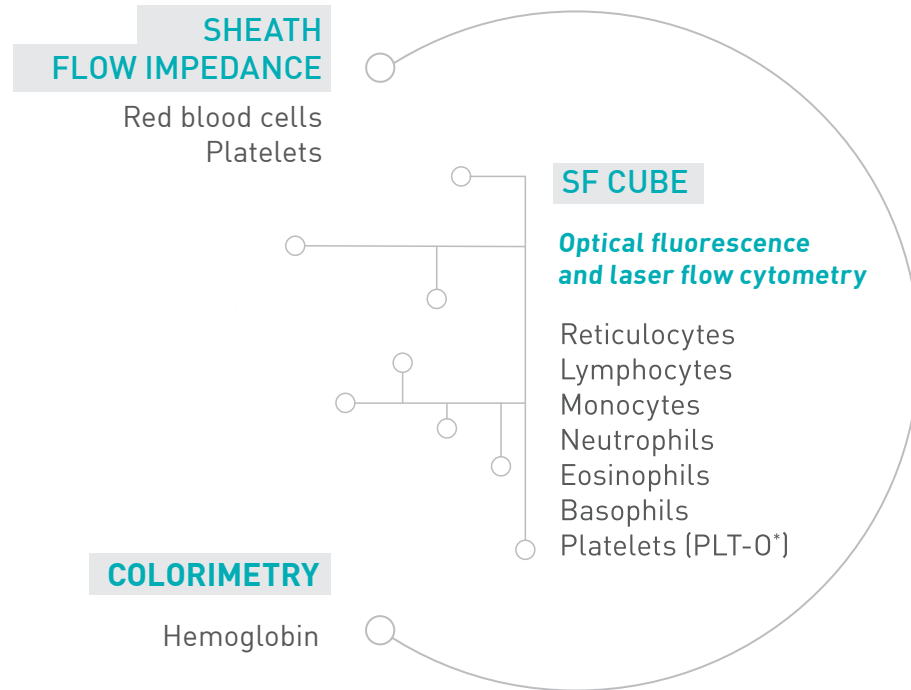
01 ENTER DATA PATIENT.

02 ASPIRATE SAMPLE.

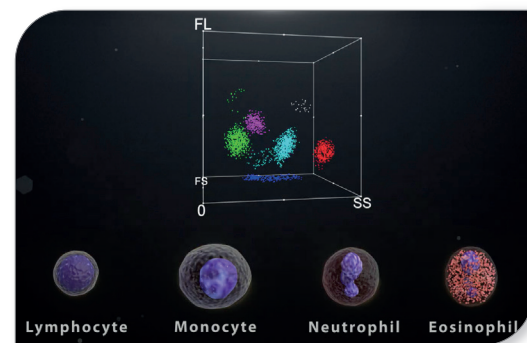
03 READ THE RESULTS.

3 technologies for accurate results!

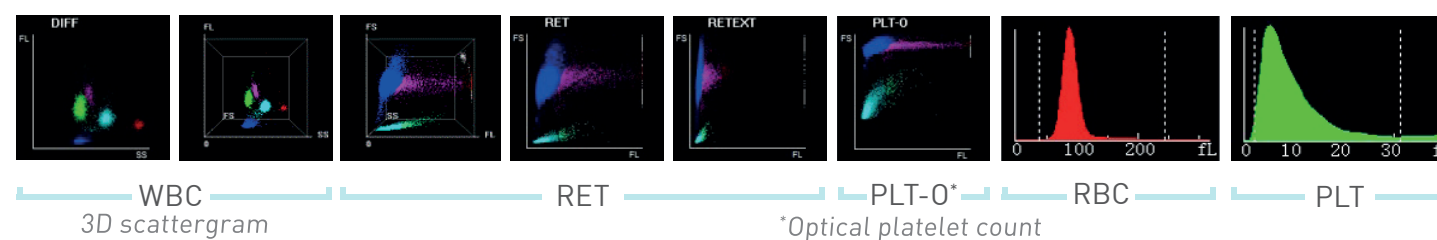
Three state-of-the-art technologies are used in the analyzer to ensure highly accurate **categorization** and **counting**. Flow cytometry in combination with optical fluorescence (SF Cube) provides precise results of **reticulocyte counting**, **leucocyte differentiation** and **optical detection of platelets**. Accurate **hemoglobin concentrations** are detected using colorimetric photometry. The erythrocyte count is carried out using the proven impedance technology.



SF Cube, a revolutionary technology!



The use of laser **flow cytometry** in combination with **optical fluorescence** provides unparalleled accuracy in **counting leucocytes and reticulocytes**. Thanks to fluorescence, the genetic material (DNA and RNA) is analyzed in order to increase the specificity of cell categorization and to avoid interferences linked in especially to platelet aggregates.

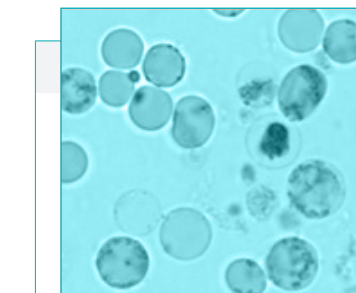


Complete hematological evaluation!

PARAMETERS
33 parameters



ERYTHROCYTES		
Red Blood Cells	RBC	
Hemoglobin	HGB	
Hematocrit	HCT	
Mean Cell Volume	MCV	
Mean Corpuscular Hemoglobin	MCH	
Mean Corpuscular Hemoglobin Concentration	MCHC	
Red Blood Cells Distribution Width	RDW	
LEUCOCYTES		
White Blood Cells	WBC	
Lymphocytes	LYM#, LYM%	
Monocytes	MON#, MON%	
Neutrophils	NEU#, NEU%	
Eosinophils	EOS#, EOS%ww	
Basophils	BAS#, BAS%	
PLATELETS		
Platelets	PLT	
Mean Platelet Volume	MPV	
Plateletcrit	PCT	
Platelets Distribution Width	PDW	
BODY FLUIDS		
White Blood Cells - Body Fluids	WBC-BF	
Total Nucleated Cells - Body Fluids	TC-BF#	
Mononuclear Cells	MN#, MN%	
Polynuclear Cells	PMN#, PMN%	
Red Blood Cells - Body Fluids	RBC-BF	
RETICULOCYTES		
Reticulocytes	RET#, RET%	
Reticulocyte Hemoglobin	RHE	



*Non-exhaustive list of parameters.